

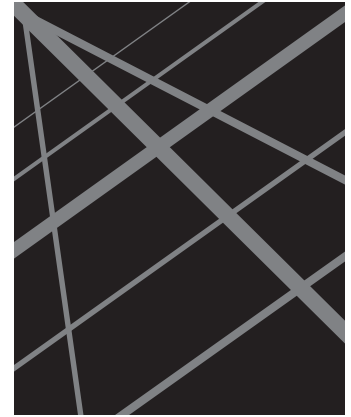


JUNE 7--9  
**2007**  
HARTFORD, CT

COMMUNITY-BASED  
COLLABORATIVE  
RESEARCH FOR  
SOCIAL JUSTICE

**GROSS** ||  
**ROADS** ||

# CROSS ROADS



**COMMUNITY-BASED  
COLLABORATIVE  
RESEARCH FOR  
SOCIAL JUSTICE**

## **CONFERENCE PROGRAM TABLE OF CONTENTS**

- 2 Welcome Letter**
- 3 General Information**
- 4 Conference Highlights**
- 6 Program At A Glance**
- 12 Program**
- 27 Posters & Panels**
- 28 Gallery Artists**
- 29 Exhibitors, Funders  
And Sponsors**
- 31 Special Thanks**
- 32 Hotel Map**



The Institute for  
Community Research



**FROM THE EXECUTIVE DIRECTOR**

**O**N BEHALF OF THE INSTITUTE FOR COMMUNITY RESEARCH, *I am very pleased to welcome you to Crossroads II: Community-Based Collaborative Research (CBCR) for Social Justice. This is the second international conference on CBCR organized and presented by the Institute.*

*Over the next three days, you will hear, see and engage with people from many walks of life with similar goals but diverse experiences and interests. The tremendous breadth and depth of critical social justice issues for which CBCR can offer innovative responses is evident in the exciting conference program of speakers, workshops, panels, posters, exhibits, and performances. Constructive partnerships between researchers and community members, health and service providers, artists, and activists are evident in these many efforts to identify and respond to structural factors creating health and social inequities, efforts to bring science to practice and research to community action, and creative expressions of community and research perspectives on injustice, empowerment, and cultural resilience.*

*Locally, nationally, and globally today we can find rampant evidence of inequities in access to resources, information, health care, security, and aesthetic expression. Social injustice shapes epidemic diseases, uneven economic development, environmental hazards, and under-representation in cultural and artistic expression that disproportionately affect disadvantaged groups. Scientific contributions to solving these problems are often far removed and not relevant to the affected communities. CBCR, based on principles of community participation in the research process, can bridge the gap between research and community to benefit society as a whole, and underprivileged groups in particular. The Crossroads II conference program addresses the promise and challenges of linking research and community for the purpose of alleviating these inequities and transforming communities in positive ways.*

*I invite and encourage you to take advantage of the many venues in which conference participants have chosen to reflect and relate their experiences using CBCR approaches, or their interest in exploring CBCR as a new alternative to address problems not alleviated by science or community efforts alone. Thanks to all of the panelists, keynote speakers and performers, exhibitors, and participants for your contributions to making this an inspiring program. Special thanks to our funders and sponsors, without whom this endeavor would have been impossible.*

*We look forward to your engagement and hope you find the conference provocative, stimulating, and valuable for your continued endeavors.*

Margaret R. Weeks, Ph.D.  
The Institute for Community Research

**ABOUT THE CONFERENCE**

‘Crossroads II: Community-Based Collaborative Research for Social Justice’ will focus on the promise, pitfalls, and ‘best practices’ of community-based collaborative research (CBCR) to address disparities and inequities in the arenas of health, education, artistic and cultural representation, development, and the environment. Communities worldwide face social inequities that adversely affect public health, education, economic development, environmental quality, and cultural and artistic representation. CBCR, based on principles of participation in the research process, blends local knowledge, activism and cultural expression with scientific theory-driven methods to generate new knowledge and action. Successful CBCR relies on different perspectives to look critically at the ways in which the research is - and can be - used to promote social justice.

The conference aims to engage an interdisciplinary, international network of researchers, community partners, artists, activists, service providers, health professionals, educators, students, policymakers and funders, in how to address root causes of disparities, how to translate scientific interventions for real world settings, and how to integrate research with creative expression. Crossroads II participants will explore how to effectively link research to community action, strengthening both. The conference program includes a gallery exhibition, panels, posters, workshops, keynote addresses, performances, and more.



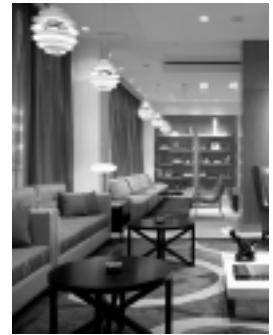
The Institute for Community Research's offices in Hartford.

**ABOUT THE INSTITUTE FOR COMMUNITY RESEARCH**

The Institute for Community Research is a private, nonprofit research institute with a commitment to building healthy communities through research partnerships. Our research focuses on reducing disparities and lack of access to resources in health and mental health, education and cultural development that result from economic, political, social or cultural marginalization. With our partners and stakeholders, we use research as a tool to help understand why these disparities exist, and to find solutions to them. ICR was founded in 1987 based on critical social science and education principles and methods of participatory and partnership action research. Our mission is to conduct research in collaboration with community partners to promote justice and equity in a diverse, multiethnic world.

**CONFERENCE LOCATION**

The main conference events will be held at the Hilton Hartford Hotel, 315 Trumbull Street, Hartford, CT. The hotel is in the center of Hartford and within walking distance of restaurants, theaters, parks, and museums. The Crossroads II exhibit opening reception and gallery talk will take place at the Conrad L. Mallett Galleries at Capital Community College at 960 Main Street in Hartford.



Hilton Hartford Hotel lobby.

**REGISTRATION**

Registration is located on the second floor of the Hilton Hartford Hotel. Please wear your name badge to all conference events. If you lose your badge, come to the Registration desk, present identification, and we will issue you replacement materials.

**ANNOUNCEMENTS / MESSAGES**

All announcements / messages will be posted on the bulletin board at the Registration desk. Please check here for program changes, telephone messages, and other general information.

**PARKING**

Parking is available in a secured covered parking garage attached to the hotel at a rate of \$15 per day.

**INTERNET SERVICES**

The Hilton Hartford Hotel features wireless internet access in the lobby.

**EMERGENCY PHONE**

If there is an emergency, during the conference, attendees can be reached by calling the Hilton Hartford Hotel at 860-728-5151.

Hartford view courtesy of the Gr. Hartford Convention & Visitors Bureau.



**FEATURED SPEAKERS /  
PERFORMERS**



**Makani Themba-Nixon**

Themba-Nixon is Executive Director of The Praxis Project, a nonprofit organization helping communities use media and policy advocacy to advance health equity and justice. She has published numerous articles and case studies on race, media, policy advocacy and public health including 'Making Policy, Making Change,' which examines media and policy advocacy for public health. Her latest book with Hunter Cutting is 'Talking the Walk: Communication Guide for Racial Justice.'



**Michele Fine**

Fine is a Distinguished Professor of Psychology, Women's Studies and Urban Education at the Graduate Center, CUNY. Her research focuses on social injustice: how injustice is sustained and resisted; how critical consciousness develops; when elites awaken to unjust privilege, and how critical research methods support social movements. Crafted at the intersection of feminist, critical race and social justice theory, her participatory action research projects with women in prisons and youth in schools and communities are designed toward critical social theory, community organizing and social change.



**Charles R. Martinez**

Martinez is a clinical psychologist, research scientist and director of the Latino Research Team at the Oregon Social Learning Center. His

research interests include risk and protective factors in Latino families facing stressful life events, the development and evaluation of culturally specific interventions for Latino families with youngsters at risk for behavioral health problems, and ethnic minority health disparities. Dr. Martinez has received numerous awards for his work, including the '2003 Community, Culture, and Prevention Science Award' from the Society for Prevention Research.



**Jean J. Schensul**

A Senior Scientist at The Institute for Community Research, Schensul is a medical/educational anthropologist with a background in qualitative and mixed methods research and a career commitment to the development of community-based research institutions in the U.S., South Asia and Latin America that use social and health science research in partnership with communities to address issues of disparity and social justice. Founding director of ICR (1987 to 2004), she has guided the evolution of its programs of participatory, basic, intervention, and action research, cultural conservation and support for urban artists.

**Linda Goss**

A storyteller in the tradition of her African and African American ancestors, Goss's repertoire includes folktales and original pieces developed through oral history research with family & community members. In 1982, Goss and other storytellers created *In the Tradition: National Black Storytelling Festival*, which gave birth to the National Association of Black Storytellers in 1984.



**John O'Neal**

O'Neal is a writer, performer, and founder and artistic director of Junebug Productions, a nationally acclaimed touring theatre company and community development program in New Orleans. Recently he and collaborator Theresa Holden won the Ford Foundation's *Leadership for a Changing World* award for their Color Line Project, a national story collection project about the Civil Rights Movement.



**Judy Dworin**

In 1989 Dworin founded the Judy Dworin Performance Project, Inc. with the belief that the arts challenge cultural values and inspire change. The project's main work includes cutting edge performance, educational residency for underserved populations in schools and prisons, and a mentoring program for artists. Dworin has received the CT Dance Alliance Award for Distinguished Service and the CT Governor Arts Award. She has published articles in such journals as *Contact Quarterly* and *Northeast Magazine*.



**Ron Casanova**

Casanova is an artist, organizer and activist who has worked as an AIDS counselor, and as a drug counselor for juvenile offenders. His main focus, however, is with the homeless and he has served as vice president of the National Union of the Homeless, editor of the *Union of the Homeless National News*, and director of The Kansas City Union of the Homeless. His latest

book is 'Each One Teach One: Up and Out of Poverty: Memoirs of a Street Activist.'

**Joe Young**

A well-known animator and executive director of the Hartford Animation Institute, Young runs programs for city youth that include drawing, cartooning, storyboard and script writing, and new media. Young collaborated with ICR to create the traveling exhibit 'Rollin' and Dustin: Pathways to Urban Lifestyles,' which tells the story of youth drug use in Connecticut from 1998 to 2005.

**Dwayne Proctor**

A distinguished educator and researcher, Proctor is team leader for the Robert Wood Johnson Foundation's Childhood Obesity Team. As a senior communications and program officer, Proctor has worked on such child health and risk-prevention initiatives as *Nurse Family Partnership*, *Free to Grow*, *Leadership to Keep Children Alcohol-Free* and *National Campaign to Prevent Teenage Pregnancy*. As a Fulbright Fellow in Senegal, West Africa, he researched the effectiveness of HIV/AIDS risk messages in a campaign to raise AIDS awareness as a national health problem.



*Artifact Dance*, wood artifact encased in glass, by Joy Wolke

**GALLERY OPENING RECEPTION**

***Crossroads II: Explorations of Social and Environmental Justice Issues***  
**Conrad L. Mallett Galleries Capital Comm. College**  
**Thurs., June 7, 6 – 8 pm**

A multimedia exhibit showcasing individual work and collaborative projects by artists, researchers, and communities from across

the United States and Canada. The reception follows the conference opening event and features live music from the Alvin Carter Trio.

**OTHER EXHIBITS ON DISPLAY**  
**Hilton Hartford Hotel, Hilton Commons**  
**Friday & Saturday, June 8 & 9**

***In Her Mother's Shoes***, a prize-winning photo essay presented on 10 stand alone panels, portrays the impact of HIV/AIDS on women and their families in South Africa. The exhibit will be on display throughout the conference.

***Rollin' and Dustin': Pathways to Urban Life Styles***, a collaborative project of The Institute for Community Research and the Hartford Animation Institute, features 13 panels detailing the findings from almost 10 years of research on youth drug use in Hartford.

**OPEN MIC**

**Hosted by Damion Sincere Morgan**  
**Hilton Hartford Hotel, Hilton Ballroom West**  
**Friday, June 8, 9 – 11 pm**

The event will feature spoken word artists, singers and more. Conference attendees are invited to relax, network and share their creativity.

**Damion Sincere Morgan** is a poet, musician and prevention research educator at The Institute for Community Research.

**ARTISTS' MARKETPLACE**  
**Hilton Hartford Hotel, Hilton Commons**  
**Friday & Saturday, June 8 & 9**

Selected traditional artists representing the rich cultural and ethnic heritage of southern New England will demonstrate and sell their work. Several participants from ICR arts programs, the Connecticut Cultural Heritage Arts Program and the Urban Artists Initiative, will participate. Artists include Eldrid Arntzen,



Traditional artists will display and sell their work at the Artists' Marketplace.

Norwegian rosemaling (painting on wood); Mai See Her and other Hmong textile artists; Bosnian weavers; Sharokin Betgevargiz and women from the Assyrian Christian community; Fatima Ahmed, Somalian seamstress; and refugees from Iraq, selling a variety of art forms, including textiles and small paintings.

**FILM SCREENINGS**  
**Hartford Hilton Hotel, PT Barnum**  
**Friday, June 8, 5 – 9 pm**

The following movies will be shown: *Madres Unidas: Parents Researching for Change*, Andrea Dyrness, Trinity College. Two stories – that of parent researchers in Madres Unidas and the new small school they helped found are featured in this film.

*A Chinatown Banquet*, Mike Blockstein and the Asian Community Development Corporation. This film offers a glimpse into the history, culture, and character of Boston's Chinatown.

*FIX: Story of an Addicted City*, Ann Livingston, VANDU, Vancouver, BC. Community activism and the struggle for an injection site in Vancouver, BC, Canada are highlighted.

**PROGRAM AT A GLANCE | THURSDAY JUNE 7**

The Program At A Glance is separated by day. Friday and Saturday schedules are further separated by morning, afternoon, and evening (Friday only) event listings. The program offers numerous activities for attendees.

Location	9:00am – 3:00pm	4:00pm – 6:00pm	6:00pm – 8:00pm
Hilton Lobby	Pre-Conference Tour of Hartford		
ICR Offices 2 Hartford Square West Suite 100	Pre-Conference Workshops A & B 9am – 3pm  Workshop C 10am – 12pm		
Connecticut Ballroom (Prefunction Area)	Registration 11:00am – 6pm		
Hilton Commons		Welcome / Opening Reception / Performance Waking Up the People: Storytelling in the African-American Oral Tradition	
The Conrad L. Mallett Galleries Capital Community College, 960 Main			Exhibit Opening / Reception Crossroads II: Explorations of Social and Environmental Justice Issues

**PROGRAM AT A GLANCE | FRIDAY JUNE 8 | MORNING SCHEDULE**

Location	7:00am – 8:00am	8:00am – 9:30am	9:45am – 10:45am	11:00am – 12:30pm
<b>Connecticut Ballroom</b> (Prefunction Area)	<b>Registration</b> 7am – 5pm			
<b>Hilton Ballroom</b>	<b>Continental Breakfast</b>		<b>Opening Plenary</b> Contesting Injustice / Insisting on Human Rights: PAR by and for Youth	
<b>Connecticut Salon A</b>		<b>Breakout Session 1A</b> Art & Healing: Connecticut's VNA's Hospice Program		<b>Breakout Session 2A</b> Bilingual Language Learning or Language Disorder – How Do You Tell the Difference?
<b>Connecticut Salon B</b>		<b>Breakout Session 1B</b> Community Research Partnership Program: A Project of Yale's CIRA		<b>Breakout Session 2B</b> Policy, Housing Access and Homeless Prevention
<b>Connecticut Salon C</b>		<b>Breakout Session 1C</b> Creating & Sustaining Real Partnerships that Support the Cultural Heritage of Immigrant Groups		<b>Breakout Session 2C</b> Gender, Power and Violence
<b>Ethan Allen</b>		<b>Breakout Session 1D</b> The Future of CBCR: Financial Support & Political Will		<b>Breakout Session 2D</b> Obesity, CBCR and Social Justice
<b>Silas Deane</b>		<b>Breakout Session 1E</b> Developing Research Partnerships to Address Health Disparities Among Vulnerable Older Adults		<b>Breakout Session 2E</b> A Picture Isn't Worth a Thousand Words: Evaluating Community Arts Programs
<b>Nathan Hale North</b>		<b>Breakout Session 1F</b> All Health is Local: Community Partnerships to Address Health Inequities		<b>Breakout Session 2F</b> Innovative Methods to Identify Needs of Underserved Populations
<b>Nathan Hale South</b>		<b>Breakout Session 1G</b> Power & Stigma in the LGBTQ Community		<b>Breakout Session 2G</b> Peers Making a Difference: Community Level HIV / AIDS Prevention Interventions
<b>Mark Twain</b>		<b>Breakout Session 1H</b> Displacement, Dislocation & Relocation: Lessons on Place		<b>Breakout Session 2H</b> Evidence-Based Interventions and Community
<b>Hilton Ballroom West</b>		<b>Breakout Session 1I</b> Best Practices Intervention Models: Development, Implementation, Evaluation, Dissemination and Replication		<b>Breakout Session 2I</b> Community-Based Research Organizations: Founders, Funders and Functions
<b>Hilton Commons</b>		<b>Artists' Marketplace</b> 9am – 7pm		

**PROGRAM AT A GLANCE | FRIDAY JUNE 8 | AFTERNOON SCHEDULE**

Location	12:30pm – 1:15pm	1:15pm – 2:15pm	2:15pm – 3:15pm	3:30pm – 5:00pm
<b>Connecticut Ballroom</b> (Prefunction Area)	<b>Registration</b>			
<b>Hilton Ballroom</b>	<b>Lunch</b>	<b>Plenary</b> Moving a Social Research Agenda When Speaking the Truth is Not Enough	<b>Performance</b> Moving Towards Rehabilitation and Healing: Arts in Prison	
<b>Connecticut Salon A</b>				<b>Breakout Session 3A</b> Autism Advocacy: A Long Way From Science to Practice
<b>Connecticut Salon B</b>				<b>Breakout Session 3B</b> Innovative Methods to Create Communities for Action
<b>Connecticut Salon C</b>				<b>Breakout Session 3C</b> Using Research to Support Advocacy & Policy Change
<b>Ethan Allen</b>				<b>Breakout Session 3D</b> Perspectives & Experiences Translating CDC HIV Prevention Evidence-Based Interventions
<b>Silas Deane</b>				<b>Breakout Session 3E</b> Environmental Justice: Race, Place and Health
<b>Nathan Hale North</b>				<b>Breakout Session 3F</b> Living Histories: Incorporating Art, Ethnography & Reminiscence to Tell Our Stories
<b>Nathan Hale South</b>				<b>Breakout Session 3G</b> A Revolution Conceived in the Most Unlikely of Places: A Community-Based Action Research Journal
<b>Mark Twain</b>				<b>Breakout Session 3H</b> Challenges Conducting Research to Benefit Those Moving Through Correctional Facilities
<b>Hilton Ballroom West</b>				<b>Breakout Session 3I</b> Artist / Researcher Collaborations & Negotiations
<b>Hilton Commons</b>	<b>Artists' Marketplace</b>			

**PROGRAM** | **FRIDAY** | **EVENING**  
**AT A GLANCE** | **JUNE 8** | **SCHEDULE**

Location	5:00pm	5:30pm – 7:00pm	6:30pm – 8:00pm	9:00pm – 11:00pm
Connecticut Ballroom (Prefunction Area)		Poster / Exhibitors Viewing & Reception		
PT Barnum	Film Screening 5pm – 9pm			
Connecticut Salon A			<b>Breakout Session 4A</b> Microbicides: Revolutionizing HIV Prevention	
Connecticut Salon B			<b>Breakout Session 4B</b> New Directions in Health	
Connecticut Salon C			<b>Breakout Session 4C</b> Who Do You Think You Are and What (in the World) Are You Doing?	
Ethan Allen			<b>Breakout Session 4D</b> Up and Out of Poverty: An Activist Perspective	
Silas Deane			<b>Breakout Session 4E</b> Popular Culture and the Media in Community Activism	
Nathan Hale North			<b>Breakout Session 4F</b> Community-Based Collaborative Research for Youth with Disabilities	
Nathan Hale South			<b>Breakout Session 4G</b> Effective Community Strategic Planning Through Participatory Research	
Mark Twain			<b>Breakout Session 4H</b> Culture, Tourism and Development on China's Lugu Lake	
Hilton Ballroom West			<b>Breakout Session 4I</b> Strengthening Communities Through Youth Arts-Based Programs	<b>Open Mic</b>
Hilton Commons	Artists' Marketplace	Poster / Exhibitors Viewing & Reception		
3rd Floor Lobby		Poster / Exhibitors Viewing & Reception		

**PROGRAM AT A GLANCE | SATURDAY JUNE 9 | MORNING SCHEDULE**

Location	7:00am – 8:00am	8:00am – 9:30am	9:45am – 10:45am	11:00am – 12:30pm
Connecticut Ballroom (Prefunction Area)	Registration 7am – 1:30pm			
Hilton Ballroom	Continental Breakfast		<b>Keynote</b> The Politics of Translating Science for Diverse Cultures	
Connecticut Salon A		<b>Breakout Session 5A</b> Innovative Methods in Community-Based Collaborative Research		<b>Breakout Session 6A</b> Conceptualizing, Developing and Evaluating Structural Interventions to Prevent Health Disparities
Connecticut Salon B		<b>Breakout Session 5B</b> The Use of Art as a Research Tool		<b>Breakout Session 6B</b> Violence Prevention & Youth
Connecticut Salon C		<b>Breakout Session 5C</b> Effective Collaborative Partnerships: The Univ. of CT Urban Social Track and the Connecticut Primary Care Association		<b>Breakout Session 6C</b> National & Foundation Funded Community Collaborative Research in Health: Peer Review Opportunities & Challenges
Ethan Allen		<b>Breakout Session 5D</b> Challenges in HIV Prevention, Services and Research		<b>Breakout Session 6D</b> Service Learning, CBPR, and Social Justice
Silas Deane		<b>Breakout Session 5E</b> Story Circle		<b>Breakout Session 6E</b> Development in Developing Countries? CBR to Evaluate & Critique Development Programs
Nathan Hale North		<b>Breakout Session 5F</b> Research for Social Justice Organizing and Advocacy: The Example of New York City		<b>Breakout Session 6F</b> Cultural and Structural Dimensions of HIV Risk in India
Nathan Hale South		<b>Breakout Session 5G</b> Bridging the Gap Between Grassroots Organizing & Research: The Connecticut Experience		<b>Breakout Session 6G</b> HIV & Older Adults: Improving Knowledge, Challenging Assumptions & Developing Successful Partnerships for Research, Advocacy & Activism
Mark Twain		<b>Breakout Session 5H</b> International Collaborations in HIV Prevention Research Issues, Challenges, & Lessons Learned		<b>Breakout Session 6H</b> Results of the Hepatitis Vaccine Study
PT Barnum		<b>Breakout Session 5I</b> Spirituality, Research and Community: Partnerships for Health Equity & Social Justice		<b>Breakout Session 6I</b> The Project Choice Campaign & the Sheff Movement Coalition
Hilton Ballroom West		<b>Breakout Session 5J</b> The Artist as Researcher		
The Conrad L. Mallett Galleries Capital Community College, 960 Main St.				<b>Breakout Session 6J</b> Gallery Talk
Hilton Commons		<b>Artists' Marketplace</b> 9am – 4pm		

**PROGRAM AT A GLANCE | SATURDAY JUNE 9 | AFTERNOON SCHEDULE**

Location	12:30pm – 1:30pm	1:45pm – 2:45pm	3:00pm – 4:00pm	4:00pm – 5:00pm
<b>Connecticut Ballroom</b> (Prefunction Area)	<b>Registration</b>			
<b>Hilton Ballroom</b>	<b>Lunch</b>		<b>Closing Plenary</b> Co-Creating the Future: Global Sites, Local Settings, Social Justice and CBCR	<b>Closing Storytelling Performance</b>
<b>Connecticut Salon A</b>		<b>Breakout Session 7A</b> Criminalization of Drug Use and HIV		
<b>Connecticut Salon B</b>		<b>Breakout Session 7B</b> Harnessing the Media for Arts-Based Intervention and Dissemination Projects		
<b>Connecticut Salon C</b>		<b>Breakout Session 7C</b> Community Leadership and Empowerment Training		
<b>Ethan Allen</b>		<b>Breakout Session 7D</b> Hispanic Health Council: A Model for CBCR Designed to Address Health Inequities		
<b>Silas Deane</b>		<b>Breakout Session 7E</b> Changing the Climate for Participation: Stakeholders in Climate Change Adaptation Research, Policy and Implementation		
<b>Nathan Hale North</b>		<b>Breakout Session 7F</b> Understanding Communities: The Link Between Interdisciplinary Art and Community		
<b>Nathan Hale South</b>		<b>Breakout Session 7G</b> Addressing the Mental Health Needs of Children and Their Families		
<b>Mark Twain</b>		<b>Breakout Session 7H</b> Downside Up & Outside In: Student Education Through Project-Based Learning or Community Partnerships		
<b>Hilton Commons</b>	<b>Artists' Marketplace</b>			

**AGENDA**

**9 am – 3 pm**

**Pre-Conference Tour of Hartford**

**Hilton Hartford Hotel**

(see description at right)

**9 am – 3 pm**

**Pre-Conference Workshops**

**The Institute for Community Research**

(see descriptions at right)

**11 am – 6 pm**

**Registration**

**Hilton Hartford Hotel, 2nd Floor**

**4 pm – 6 pm**

**Welcome and Opening Reception**

**Hilton Hartford Hotel, Hilton Commons**

**MC: Colleen Coleman**, Artistic Director, The Institute for Community Research (ICR)

**Speakers: rJo Winch**, Majority Leader, Hartford City Council, Hartford, CT;

**Marnie Mueller**, President, Board of Directors, ICR; **Margaret R. Weeks**, Executive Director, ICR

**Performance:** ‘Waking Up the People: Storytelling in the African-American Oral Tradition’

**Performer: Linda Goss**, Storyteller

**6 pm – 8 pm**

**Gallery Opening and Reception**

**The Conrad L. Mallett Galleries, Capital**

**Community College, 960 Main Street, Hartford**

**Exhibit:** ‘Crossroads II: Explorations of Social and Environmental Justice Issues’

**Welcome: Colleen Coleman**, Curator & Artistic Director, ICR

**Entertainment: Alvin Carter Trio**

**Tour of Hartford | 9 am – 3 pm** (advance registration required)

The tour will make three stops, including a lunch stop, and will focus on the three conference track themes: 1) Root causes of inequities, 2) Translating interventions, and 3) Integrating art and research. The tour bus will depart promptly at 9 am from the Hilton Hartford Hotel lobby and will end at The Institute for Community Research’s offices in Hartford, for a follow-up discussion. Transportation will be provided back to the hotel.

**Tour Discussion Facilitator: Reinaldo Rojas**, City of Hartford Health and Human Services Department, Hartford, CT

**Workshops** (advance registration required)

**A. GIS Workshop on Mapping Neighborhoods for Community-Based Research**

**9 am – 3 pm**

This workshop emphasizes GIS functions and data that can be used to describe neighborhoods from social, spatial, perceptual, and administrative dimensions in community-based research.

**Presenter: Ellen Cromley**, The Institute for Community Research (ICR), Hartford, CT

**B. Social Network Analysis**

**9 am – 3 pm**

Exploring the relationships among actors in a social context, the workshop focuses on the analysis of network data and the consideration of network-informed action / intervention strategies.

**Presenter: Steve Borgatti**, Analytic Technologies, Needham, MA

**C. Ethical Challenges and Guidelines in Community-Based Research**

**10 am – 12 pm**

This workshop will review the history and development of the frameworks for research ethics that are commonly utilized in health, social science and educational research, ethical considerations in partnership development, basic concepts in protection of human subjects, and other issues that community-based researchers face.

**Presenter: Robert Levine**, Yale University School of Medicine, New Haven, CT



*James Colburn*, last meal of condemned prisoner, oil on canvas, by Kate MacDonald

**MORNING AGENDA**

**7 am – 5 pm**

**Registration**

**Hilton Hartford Hotel, 2nd Floor**

**7 am – 8 am**

**Continental Breakfast**

**Hilton Ballroom**

**8 am – 9:30 am**

**Breakout Session I**

(see descriptions pp 13–14)

**9 am – 7 pm**

**Artists' Marketplace**

**Hilton Commons**

**9:30 am – 9:45 am**

**Break**

**9:45 am – 10:45 am**

**Opening Plenary**

**Hilton Ballroom**

**Keynote:** 'Contesting Injustice / Insisting on Human Rights: Participatory Action Research By and For Youth'

**Speaker:** **Michelle Fine**, Distinguished Professor of Psychology, Women's Studies and Urban Education at the Graduate Center, CUNY

**10:45 am – 11 am**

**Break**

**11 am – 12:30 pm**

**Breakout Session II**

(see descriptions pp 15–16)

**Session I (concurrent) | 8 am – 9:30 am**

**1.A. Art and Healing: Connecticut VNA's Hospice Program  
Connecticut Salon A**

This panel will present the Connecticut VNA's Expressive Arts Program. This program uses art and music to help terminally ill patients reflect and find meaning in their lives thereby enhancing quality of life.

**Chair:** **Paul Trubey**, CT VNA's Hospice Program by Masonicare, Wallingford, CT

**Christine Bailey**, CT VNA's Hospice Program by Masonicare, Wallingford, CT

**Susan Rosano**, CT VNA's Hospice Program, by Masonicare, Wallingford, CT

**1.B. Community Research Partnership Program: A Project of Yale's Center for Interdisciplinary Research on AIDS (CIRA)**

**Connecticut Salon B**

This panel describes Yale's Center for Interdisciplinary Research on AIDS (CIRA) Community Research Partnership Program (CRPP) that supports pilot research by community-based organizations in collaboration with CIRA scientists. The panel, consisting of community and CIRA researchers, will explore the challenges and successes of this approach to community-based research.

**Chair:** **Leif Mitchell**, Center for Interdisciplinary Research on AIDS (CIRA), New Haven, CT

**Laura Minor**, Wheeler Clinic, Plainville, CT

**Kristin duBay Horton**, duBay Horton Associates, Bridgeport, CT

**Nicholas Boshnack and Lynda Faye Wilson**, AIDS Project New Haven, New Haven, CT

**Jean Breny-Bontempi**, Southern Connecticut State University, New Haven, CT

**1.C. Creating and Sustaining Real Partnerships that Support the Cultural Heritage of Immigrant Groups**

**Connecticut Salon C**

In this interactive workshop, discussants will describe the challenges of creating and sustaining partnerships to support the cultural heritage of immigrant groups.

**Chair:** **Lynne Williamson**, The Institute for Community Research, Hartford, CT

**Mario Reyes**, Association of Peruvian-American Professionals, Simsbury, CT

**Howard Phengsomphone**, Board Member, Lao Association of CT, West Hartford, CT

**Nilofer Haidar**, TESOL/ESL Teacher, South Windsor, CT

\*Session presenter names are indicated in bold type

## FRIDAY MORNING BREAKOUT SESSIONS (continued)

SESSION I (8 am – 9:30 am) continued

### **1.D. The Future of Community-Based Collaborative Research: Financial Support and Political Will** **Ethan Allen**

In this session representatives of the public, private and NGO sectors will contextualize CBCR, describe current support for and criticism of CBCR and discuss the financial and political future of this evolving mechanism.

**Chair: Jean J. Schensul**, The Institute for Community Research, Hartford, CT

**Judith Harmony**, Harmony Project, Cincinnati, OH

**Rick Worthington**, Pomona College, Pomona, CA

**Ella Green-Moton**, University of Michigan / Campus-Community Partnerships for Health, Ann Arbor, MI

### **1.E. Developing Research Partnerships to Address Health Disparities Among Vulnerable Older Adults** **Silas Deane**

This panel will present examples of successful community-based research partnerships that address health disparities and implement innovative strategies to improve access to care, increase health literacy and train older adults to become knowledgeable public health advocates.

**Chair: Kim Radda**, The Institute for Community Research (ICR), Hartford, CT

**George Kuchel**, Center on Aging, University of Connecticut Health Center, Farmington, CT

**Elsie Vazquez**, Kim Radda, Jean J. Schensul, Emil Coman, ICR, Hartford, CT; Rita Jepsen, George Kuchel, Janet McElhaney, Center on Aging, University of Connecticut Health Center, Farmington, CT

**Olga Jarrin and Patricia Neafsey**, University of Connecticut, School of Nursing, Storrs, CT

### **1.F. All Health is Local: Community Partnerships to Address Health Inequities**

**Nathan Hale North**

Panelists will present cases of partnerships between researchers and local community residents to address health and mental health inequities.

**Chair: Mary Jo Baisch** and James Sanders, University of Wisconsin, Milwaukee, WI

**Dalia Lovera**, B. McCabe-Seller, K. Frazier, E.

Strickland, and M.L. Bogle, USDA, Delta NRI, Little Rock, AR

**Karen Breda & Kim Groot**, University of Hartford, CT

### **1.G. Power and Stigma in the LGBTQ Community** **Nathan Hale South**

This panel will explore the impact of power and stigma on the LGBTQ community and on the collaborative research process.

**Chair: Gannon Long**, The Institute for Community Research, Hartford, CT

**Carl Shields**, Capitol Region Mental Health Center, Hartford, CT

**Jason Seacat**, Center for Health, Intervention, and Prevention (CHIP), University of Connecticut, Storrs, CT

**Michelle A. Marzullo**, American University, Washington, DC

### **1.H. Displacement, Dislocation and Relocation: Lessons on Place** **Mark Twain**

Papers in this panel will describe research tracking the results of the demolition of public housing in Tampa, Florida, and the collaborations involved in the research including three service learning classes.

**Chair: Beverly Ward**, Univ. of South Florida, Tampa, FL

**Susan Greenbaum**, Univ. of South Florida, Tampa, FL

**Cheryl Rodriguez**, Univ. of South Florida, Tampa, FL

**Brett Mervis**, Univ. of South Florida, Tampa, FL

### **1.I. Best Practices Intervention Models: Development, Implementation, Evaluation, Dissemination and Replication** **Hilton Ballroom West**

This session will highlight the development, implementation, evaluation, replication and dissemination of best practice service models aimed at addressing health inequities through case study examples.

**Chair: Grace Damio**, Hispanic Health Council (HHC), Hartford, CT

**Grace Duarte Baker**, HHC, Hartford, CT

**Nan Kyer**, HHC, Hartford, CT

**Sonia Vega**, HHC, Hartford, CT

**Karem Perez-Rivera**, HHC, Hartford, CT

**Sofia Segura-Perez**, HHC, Hartford, CT

**Session II** (concurrent) | 11 am – 12:30 pm

**2.A. Bilingual Language Learning or Language Disorder – How Do You Tell the Difference?**

**Connecticut Salon A**

This skill-building workshop focuses on differentiating typical characteristics of language-learning from language disorders in bilingual children.

**Christina Foreman**, Hope Speech and Language Center / University of Massachusetts, Amherst, MA

**2.B. Policy, Housing Access and Homeless Prevention**  
**Connecticut Salon B**

This panel will explore issues surrounding housing access among disenfranchised populations, and programs to prevent homelessness and help vulnerable populations maintain stable housing.

**Chair: Irene Glasser**, Patrick Hynes, William H. Zywiak, and Eric Hirsh, Community Renewal Team, Hartford, CT

**Corey Dolgon**, Worcester State College, Milton, MA  
**Mandira Kala and Julia Tripp**, Centre for Social Policy, University of Massachusetts, Boston, MA

**2.C. Gender, Power and Violence**

**Connecticut Salon C**

Panelists will present research that examines the causes of violence against women and children, community-based interventions to prevent gendered violence, and the relationship between violence and HIV risk.

**Chair: Julia Dickson-Gomez**, The Institute for Community Research, Hartford, CT

**Ellen Smith**, University of Connecticut, School of Social Work, Storrs, CT

**Courtenay Cavanaugh** and Nathan Hansen, Center for Interdisciplinary Research on AIDS, Yale University, New Haven, CT

**Deborah Fry**, New York Alliance Against Sexual Assault, New York, NY

**Marcia Mikulak** and Julie Christianson, University of North Dakota and the Community Violence Center, Grand Forks, ND

**2.D. Obesity, Community-Based Collaborative Research and Social Justice**

**Ethan Allen**

Presentations will discuss environmental and social causes of obesity and prevention interventions to address these using a community-based collaborative approach.

**Chair: Dwayne C. Proctor**, Team Leader, Robert Wood Johnson Foundation's Childhood Obesity Team, Princeton, NJ

**Kelly D. Brownell**, Rudd Center for Food Policy and Obesity, Yale University, New Haven, CT

**Shiriki K. Kumanyika**, UPenn School of Medicine, Philadelphia, PA / African-American Collaborative Obesity Research Network (AACORN), Philadelphia, PA

**Angie Cradock**, Harvard University, Cambridge, MA

**2.E. A Picture Isn't Worth a Thousand Words: Evaluating Community Arts Programs**

**Silas Deane**

This session will include examples of successful evaluation tools and program models, address challenges that community arts organizations face in evaluating their programs, and hear from the funders perspectives.

**Chair: Kim Radda**, The Institute for Community Research, Hartford, CT

**Jane Homick**, Windham Area Arts Collaborative, Willimantic, CT

**John Cusano**, CT Commission on Culture and Tourism, Hartford, CT

**Pam Korza**, Animating Democracy, Amherst, MA

**David Marshall**, Massachusetts Cultural Council, Boston, MA

**2.F. Innovative Methods to Identify Needs of Underserved Populations**

**Nathan Hale North**

This panel will present case studies using different methodologies (PAR, social network analysis) to identify and address needs of underserved and marginalized populations.

**Chair: Ken Williamson**, University of South Florida, Tampa, FL

**Rosemarie Hunter and Sarah Munro**, University of Utah, Salt Lake City, UT

**Erin Bardin** and Michael Montoya, Community Knowledge Project, University of California, Irvine, CA

**Seonhee (Sunny) Jeong**, Community Informatics Initiative, University of Illinois at Urbana-Champaign, Urbana, IL

## FRIDAY MORNING BREAKOUT SESSIONS (continued)

SESSION II (11 am – 12:30 pm) continued



### 2.G. Peers Making a Difference: Community Level HIV/AIDS Prevention Interventions

**Nathan Hale South**

This panel of peer educators, service providers and researchers will discuss the impact of peer-led HIV prevention interventions on peer educators, service organizations, researchers and the local community.

**Chair: Maria Martinez**, The Institute for Community Research (ICR), Hartford, CT

**Michelle Turgeon**, ICR, Hartford, CT

**William Frye**, ICR, Hartford, CT

**Tracy Cruz**, Hartford Dispensary, Hartford, CT

**Sonia Baez**, Hartford Dispensary, Hartford, CT

**Gina Storms**, Hartford Dispensary, Hartford, CT

**Yvonne Patterson**, Community Renewal Team, Hartford, CT

### 2.H. Evidence-Based Interventions and Community

**Mark Twain**

This session will address issues around evidence-based practice including: strengthening the capacity of programs to increase the number and range of available programs for replication; translating evidence-based programming to service/practice; and an example of how this process looks on the ground.

**Chair: Marlene Berg**, The Institute for Community Research, Hartford, CT

**Kim Dash**, Shai Fuxman, and Chelsey Goddard, Northeast Center for the Application of Prevention Technologies, Education Development Center, Inc., Newton, MA

**Lisa McGlincy and Chelsey Goddard**, Northeast Center for the Application of Prevention Technologies, Education Development Center, Inc., Newton, MA

**Sara Plachta-Elliott**, Jonathan Delman, Alisa Lincoln, and Melissa Hagan, Consumer Quality Initiatives, Roxbury, MA / Boston University School of Public Health, Roxbury, MA

**Lisa M. Vaughn** and Chris Bolling, Cincinnati Children's Hospital Medical Center / University of Cincinnati College of Medicine; **Judith Harmony**, Cincinnati community member / activist

### 2.I. Community-Based Research Organizations (CBROs): Founders, Funders and Functions

**Hilton Ballroom West**

Founders or long-term action researchers and board members or trustees from four CBROs will argue the benefits of independent community research centers, the resources needed (human, financial and social) and challenges faced in their development, and how they resist labeling to build partnerships and negotiate the competitive universe of funders, communities and universities.

**Chair: Jean J. Schensul**, The Institute for Community Research (ICR), Hartford, CT

**Kathleen Burklow, Lisa Mills** (Harmony Garden), and

**Judith Harmony**, Harmony Project, Cincinnati, OH

**Merrill Singer**, Hispanic Health Council, Hartford, CT

**Rick Kremer**, ICR, Hartford, CT

**Alayne Untermeyer**, Florida Institute for Community Studies, Tampa, FL

**AFTERNOON AGENDA**

**12:30 pm – 1:15 pm**

**Lunch**

**Hilton Ballroom**

**1:15 pm – 3:15 pm**

**Plenary & Performance**

**Hilton Ballroom**

**Keynote:** 'Moving a Social Research Agenda When Speaking the Truth is Not Enough'

**Speaker:** **Makani Themba-Nixon**, Executive Director, The Praxis Project

**Performance:** 'Moving Towards Rehabilitation and Healing: Arts in Prison'

**Performer:** **Judy Dworin**, Founder, Judy Dworin Performance Project, Inc.

**3:15 pm – 3:30 pm**

**Break**

**3:30 pm – 5 pm**

**Breakout Session III**

(see descriptions pp 17–18)

**Session III** (concurrent) | **3:30 pm – 5 pm**

**3.A. Autism Advocacy: A Long Way from Science to Practice**  
**Connecticut Salon A**

Panelists from diverse backgrounds (i.e. researchers, educators, advocates and parents) will discuss structural barriers to the early identification of autism; challenges in implementing science based interventions and advocating for appropriate services; and the potential for community-based collaborative research to advance evidence based approaches.

**Chair:** **JiangHong Li**, The Institute for Community Research, Hartford, CT

**Suzanne Letso**, Connecticut Center for Child Development, Inc., Milford, CT

**Thyde Dumont Mathiu**, St. Francis Hospital, Hartford, CT

**Christina Foreman**, Hope Speech and Language Center, University of Massachusetts, Amherst, MA

**3.B. Innovative Methods to Create Communities for Action**  
**Connecticut Salon B**

This panel discusses the use of art, storytelling, research and blogging to disseminate information, open dialogue and create communities to address environmental and social justice concerns.

**Chair:** **Lynne Williamson**, The Institute for Community Research, Hartford, CT

**Laura Orleans**, Working Waterfront Festival, New Bedford, MA

**Clinton Nichols III**, The Center for Cultural Understanding and Change, The Field Museum, Chicago, IL

**3.C. Using Research to Support Advocacy and Policy Change**  
**Connecticut Salon C**

This panel will discuss research on policies that affect people living with or at risk for contracting HIV/AIDS and strategies to advocate for policy change.

**Chair:** **Shawn Lang**, CT AIDS Resource Coalition (CARC), Hartford, CT

**Leif Mitchell**, Center for Interdisciplinary Research on AIDS, Yale University, New Haven, CT

**Julia Dickson-Gomez**, Mark Convey, and Helena Hilario, The Institute for Community Research, Hartford, CT

**Jerimarie Liesegang**, CT TransAdvocacy Coalition, Hartford, CT

**Marlene Schwartz**, Rudd Center for Food Policy and Obesity, Yale University, New Haven, CT

**Priscilla Canny**, Connecticut Voices for Children, New Haven, CT

**3.D. Perspectives and Experiences Translating CDC HIV Prevention Evidence-Based Interventions**

**Ethan Allen**

This session will describe the history, context, and activities of the CDC's diffusion project (DEBI) as well as perspectives and experiences of community agencies replicating an effective intervention.

## FRIDAY AFTERNOON BREAKOUT SESSIONS (continued)

SESSION III (3:30 pm – 5 pm) continued

3.D. continued

**Chair: Ann A. O’Connell**, University of Connecticut, Storrs, CT

**Charles Collins**, Centers for Disease Control and Prevention, Atlanta, GA

**Barry Callis**, Massachusetts Department of Public Health, Boston, MA

**Katherine Fowler**, Windham Regional Community Council, Willimantic, CT

**Marie Agramonte-Gomez**, Hispanic Health Council, Hartford, CT

**Melissa A. Davey-Rothwell**, Karin E. Tobin, and Carl A. Latkin, Johns Hopkins University, Baltimore, MD

### 3.E. Environmental Justice: Race, Place and Health

**Silas Deane**

This panel will discuss community-based collaborative research to discover and address environmental causes of health disparities.

**Chair: Edith Pestana**, CT Department of Environmental Protection / Environmental Justice Program, Hartford, CT

**Mark Mitchell**, Connecticut Coalition for Environmental Justice (CCEJ), Hartford, CT

**John Stewart**, University of Hartford, Hartford, CT

**Elizabeth Hayes**, The Newhall Coalition, Inc., Hamden, CT

**Tom Maziarz**, Capital Region Council of Government, Hartford, CT

### 3.F. Living Histories: Incorporating Art, Ethnography and Reminiscence to Tell our Stories

**Nathan Hale North**

This session will present innovative programs that incorporate art, ethnography and reminiscence in a variety of community settings and involving multiple generations in the gathering, preserving and sharing of the histories of our community elders.

**Chair: Kim Radda**, The Institute for Community Research, Hartford, CT

**Discussant: Frank Mitchell**, Westside Works

**Juliette Shellman**, Yale University, School of Nursing, New Haven, CT

**Alisha R. Winn**, University of South Florida, Tampa, FL

**Paloma McGregor**, Urban Bush Women, Brooklyn, NY

### 3.G. A Revolution Conceived in the Most Unlikely of Places: A Community-Based Action Research Journal

**Nathan Hale South**

This round table discussion will discuss the challenges and synergies in the conception of a community-based research journal that enlists community leaders and activists as research designers and editors in order to assure the relevance of research and create a dialogue between researchers and community representatives.

**Chair: Doug Smith**, Project Peacemaker, University of North Dakota, Grand Forks, ND

**Diana Julia Nastasia**, University of North Dakota, School of Communication, Grand Forks, ND

**Monique A. Myers**, Human Communications, Stonehill College, Easton, MA

### 3.H. Challenges Conducting Research to Benefit Those Moving Through Correctional Facilities

**Mark Twain**

This session will explore the intersection of prisoner and community health, present data from recent studies on prisoners, and discuss challenges and strategies for engaging in research with this population.

**Chair: Frederick L. Altice**, Yale University School of Medicine, New Haven, CT

**Anne Spaulding**, Rollins School of Public Health at Emory University, Atlanta, GA

### 3.I. Artist/Researcher Collaborations and Negotiations

**Hilton Ballroom West**

This roundtable discussion will explore some of the challenges of integrating artists’ creative processes with the requirements of scientific research.

**Chair: Colleen Coleman**, The Institute for Community Research (ICR), Hartford, CT

**Rey Bermudez and ICR Xperience Project Artist**, ICR, Hartford, CT

**Deborah Simmons**, Manchester Community College, Manchester, CT

**Orlando Velazco**, ICR, Hartford, CT

**Jean J. Schensul**, ICR, Hartford, CT

**EVENING AGENDA**

**5 pm – 9 pm**

**Film Screening**

**Hilton Hartford Hotel, PT Barnum**

**Featured Films:** *A Chinatown Banquet*, Mike Blockstein and the Asian Community Development Corporation; *Madres Unidas: Parents Researching for Change*, Andrea Dyrness, Trinity College; *FIX: Story of an Addicted City*, Ann Livingston, VANDU, Vancouver, BC  
(see descriptions p 5)

**5:30 pm – 7 pm**

**Poster/Exhibitors Viewing & Reception**

**Hilton Hartford Hotel, 2nd & 3rd Floors**  
(see poster listings p 27; exhibitors p 29)

**6:30 pm – 8 pm**

**Breakout Sessions IV**

(see descriptions pp 19–20)

**9 pm – 11 pm**

**Open Mic**

**Hilton Hartford Hotel, Hilton Ballroom West**



**FRIDAY EVENING BREAKOUT SESSIONS**

**Session IV** (concurrent) | **6:30 pm – 8 pm**

**4.A. Microbicides: Revolutionizing HIV Prevention**  
**Connecticut Salon A**

This session provides a brief introduction to microbicides – what they are, how they work and why we need them. A short film will be shown followed by discussion. Come learn about this new tool for HIV prevention.

**Facilitator: Clair Kaplan**, Yale University, School of Nursing, New Haven, CT

**4.B. New Directions in Health**  
**Connecticut Salon B**

This panel will present examples of community-based collaborative research to improve health and health care.

**Chair: Lucy Brakoniecki** and Maria Caez, Connecticut Women's Education and Legal Fund, Hartford, CT

**Susan J. Shaw**, University of Arizona, Department of Anthropology, Tucson, AZ

**Christine Cronk and Kate Costella**, Medical College of Wisconsin, National Children's Study, National Institute of Child Mental Health and Human Development, Milwaukee, WI

**Kate Ksobiech**, Center for Urban Initiatives and Research, University of Wisconsin, Milwaukee, WI

**4.C. Who Do You Think You Are and What (in the World) Are You Doing?**

**Connecticut Salon C**

Workshop participants will receive an experiential/didactic introduction to Ken Wilber's AQAL (all quadrants, levels, lines, states and types) framework to assess themselves, their disciplines and models; apply the AQAL framework to a topic of their choosing; and leave with enhanced self-awareness, an invaluable interdisciplinary tool, and resources for further engagement.

**Facilitator: Reggie Marra**, Integral Journeys for Pilgrims, Poets, Fools and Saints, New Milford, CT



(left to right) Jaime Gomez and Ronald Casanova

**4.D. Up and Out of Poverty: An Activist Perspective**  
**Ethan Allen**

This session will feature a documentary film to explore the paradox of poverty and homelessness in the United States through the eyes and life of social activist Ronald Casanova. Following the

showing, the filmmaker, Jaime Gomez and Casanova will lead a discussion about the film and its implications.

## FRIDAY EVENING BREAKOUT SESSIONS (continued)

SESSION IV (6:30 pm – 8 pm) continued

4.D. continued

**Facilitators:** **Ronald Casanova**, Artists for A Better America, Brooklyn, NY; **Jaime Gomez**, Eastern Connecticut State University, Willimantic, CT

### 4.E. Popular Culture and the Media in Community Activism

**Silas Deane**

The media and popular culture play a significant role in shaping how we view the world around us. How can we effect change on it and what is the relationship to social justice issues having to do with race, class and gender? How has commercialization impacted hip-hop's potential as a social justice movement? Is the internet helping to maintain social movements worldwide? These questions will be explored from a historical and global perspective.

**Chair:** **Damion Sincere Morgan**, The Institute for Community Research, Hartford, CT

**Andrew Marcum**, University of New Mexico Research Service Learning Program, Albuquerque, NM

**Joey Krebs**, Graffiti Artist, Los Angeles, CA

### 4.F. Community-Based Collaborative Research for Youth with Disabilities

**Nathan Hale North**

This panel will explore various approaches to improving the lives of youth with disabilities through combined efforts of community-based researchers, service providers, youth with disabilities, parents and advocates.

**Chair:** **Ellen Cromley**, The Institute for Community Research, Hartford, CT

**Maria Milazzo**, State University of New York, Department of Neurology, Stonybrook, NY

**Wade Gibbs**, University of Connecticut Center for Students with Disabilities, Storrs, CT

### 4.G. Effective Community Strategic Planning through Participatory Research

**Nathan Hale South**

In this skills building workshop, participants will be introduced to the ASPIRE database designed to store and manage community, economic, social and resource data; utilize a participatory research approach to conduct a data-driven needs assessment; develop a community strategic plan focused on addressing cultural disparities; and enhance understanding of community-research-

policy collaboration.

**Chair:** **Summer Wright**, OMNI Institute, Denver, CO

**Carole Broderick**, OMNI Institute, Denver, CO

**Jared Anthony**, SAMHSA Fellow, Denver, CO

**Jose Esquibel**, Colorado Department of Public Health and Environment, Denver, CO

### 4.H. Culture, Tourism and Development on China's Lugu Lake

**Mark Twain**

The film *80 meters* explores the environmental, economic and social impact of the tourist industry in Lige, a small village on Lugu Lake in Yunnan province in China. A facilitated discussion will follow the film viewing.

**Facilitator:** **Jennifer Dunn**, The Institute for Community Research, Hartford, CT

### 4.I. Strengthening Communities through Youth Arts-Based Programs

**Hilton Ballroom West**

This panel explores interventions and dissemination projects that have utilized young people's artistic expression as a means of communicating youth perspectives, empowering youth, and strengthening communities.

**Chairs:** **Sarah Diamond and Maritza Lopez**, The Institute for Community Research, Hartford, CT

**Lisa Rathje**, Institute for Cultural Partnerships, Harrisburg, PA

**Irene Shaikly and Yvonne Mendez**, New World Theatre, University of Massachusetts, Amherst, MA

**Laura McCargar and Youth**, Youth Rights Media, New Haven, CT



**MORNING AGENDA**

**7 am - 1:30 pm**

**Registration**

**Hilton Hartford Hotel, 2nd Floor**

**7 am – 8 am**

**Continental Breakfast**

**Hilton Ballroom**

**8 am – 9:30 am**

**Breakout Session V**

(see descriptions pp 21–22)

**9 am – 4 pm**

**Artists' Marketplace**

**Hilton Commons**

**9:45 am – 10:45 am**

**Plenary**

**Hilton Ballroom**

**Keynote:** 'The Politics of Translating Science for Diverse Cultures'

**Speaker:** **Charles Martinez**, Clinical Psychologist and Research Scientist, Oregon Social Learning Center and Director, OSLO Latino Research Team

**10:45 am – 11 am**

**Break**

**11 am – 12:30 pm**

**Breakout Session VI**

(see descriptions pp 23–24)

**Session V** (concurrent) | **8 am – 9:30 am**

**5.A. Innovative Methods in Community-Based Collaborative Research**  
**Connecticut Salon A**

Speakers will present projects that use art, poetry, dance, digital storytelling and information technologies as research tools.

**Chair:** **Elanah Uretsky**, Columbia University, Department of Socio-Medical Sciences, New York, NY

**Aline Gubrium**, University of Massachusetts, Amherst, MA

**Pato Hebert**, AIDS Project Los Angeles, Los Angeles, CA

**Elizabeth Andrejasich**, Tinnah Card, Ann P. Bishop, and Bertram C. Bruce, University of Illinois at Urbana-Champaign, Champaign, IL

**5.B. The Use of Art as a Research Tool**

**Connecticut Salon B**

Panelists will discuss the interplay of art and research in forming relationships, reflecting on the role of researcher, creating new knowledge and fostering change.

**Chair:** **Marlene Berg**, The Institute for Community Research, Hartford, CT

**Sally Campbell Galman**, University of Massachusetts, Amherst, MA

**Stephen Pavey**, Western Kentucky University, Center for Community Partnerships, Bowling Green, KY

**Lisa M. Vaughn**, Cincinnati Children's Hospital Medical Center / University of Cincinnati College of Medicine, Cincinnati, OH

**5.C. Effective Collaborative Partnerships: The University of Connecticut Urban Service Track and the Connecticut Primary Care Association**

**Connecticut Salon C**

This presentation will focus on the collaborative partnership between the University of Connecticut's Urban Service Track and the Connecticut Primary Care Association. The Urban Service Track is a new initiative between the University's Schools of Dental Medicine, Pharmacy and Nursing that brings students interested in providing care for urban underserved populations together for enhanced learning opportunities and exposure.

**Chair:** **Petra Clark-Dufner**, University of Connecticut, Urban Service Track, Farmington, CT

**Devra Dang**, University of Connecticut School of Pharmacy, Storrs, CT

**Jack Rustico**, Connecticut Primary Care Association, Hartford, CT

**5.D. Challenges in HIV Prevention, Services and Research**

**Ethan Allen**

This panel will discuss challenges in forging successful partnerships, conducting ethical research to prevent HIV, and providing services to those infected/affected by HIV.

**Chair:** **Jennifer Salonia**, The Institute for Community Research, Hartford, CT

**Kristin Kelly**, University of Connecticut, Storrs, CT

## SATURDAY MORNING BREAKOUT SESSIONS (continued)

SESSION V (8 am–9:30 am) continued

5.D. continued

**Adrian Guta** and Sarah Flicker, The Ontario HIV Network and New York University, Ontario, Canada  
**Ellen Smith and Lisa Werkmeister-Rozas**, University of Connecticut School of Social Work, Hartford, CT

### 5.E. Story Circle

**Silas Deane**

In this workshop, participants will take part in the Story Circle Process, an ongoing experiment in the application of the principles of democratic group process to storytelling in a social context.

**Facilitator: John O'Neal**, Junebug Productions, New Orleans, LA

### 5.F. Research for Social Justice Organizing and Advocacy: The Example of New York City

**Nathan Hale North**

This panel will highlight how research is being used as a strategic and effective tool to support social justice organizing and advocacy in New York City on the local and city-wide levels. Issues to be discussed will include collaborations between community-based organizations, research and policy institutions and universities, leadership development and capacity building of low income stakeholders as part of the research process and related action strategies, and dissemination of community-led research to support social justice campaigns and positive social change.

**Chair: Laine Romero-Alston**, Urban Justice Center, New York, NY

**Shoshi Doza** and Rishi Singh, Desis Rising Up and Moving (DRUM), Jackson Heights, NY

**Rehka Eanni**, Restaurant Opportunities Center of New York (ROCNY), New York, NY

**Samantha Imperatrice**, Families United for Racial and Economic Equality (FUREE), Brooklyn, NY

### 5.G. Bridging the Gap Between Grassroots Organizing and Research: The Connecticut Experience

**Nathan Hale South**

In this roundtable discussion, participants will gain knowledge of practical tools and strategies for grassroots advocacy and legislative reform to be used in their sector and setting.

**Chair: Robert Rooks**, Soros Fellow/Justice Strategies, Dallas, TX

**Gabriel Sayegh**, Drug Policy Alliance, New York, NY

**Lorenzo Jones**, A Better Way Foundation, Hartford, CT

**Judy Green**, Justice Strategies, Brooklyn, NY

**Tim Black**, University of Hartford, Hartford, CT

### 5.H. International Collaborations in HIV Prevention Research: Issues, Challenges, and Lessons Learned

**Mark Twain**

This session will address challenges in conducting international collaborative research and strategies for overcoming these. The initial discussion will present case studies of international HIV prevention research followed by an open discussion with session attendees who are encouraged to share their own experiences.

**Chair: Michelle Corbett**, The Institute for Community Research (ICR), Hartford, CT

**JiangHong Li**, ICR, Hartford, CT

**Margaret R. Weeks**, ICR, Hartford, CT

**SK Singh**, International Institute for Population Science, Mumbai, India

### 5.I. Spirituality, Research and Community: Partnerships for Health Equity and Social Justice

**PT Barnum**

This session provides a forum to discuss opportunities and challenges in developing and sustaining partnerships that engage researchers, faith communities, service providers, local organizations and residents in dialogue and action to develop and implement programs that effectively address and reduce inequities and improve quality of life.

**Chair: Kim Radda**, The Institute for Community Research, Hartford, CT

**Maurice Williams**, Yale-Griffin Prevention Center, New Haven, CT

**Cece Jones**, CT AIDS Resource Coalition, Hartford, CT

**Robert L. Miller**, State Univ. of New York, Albany, NY

### 5.J. The Artist as Researcher

**Hilton Ballroom West**

Artists and researchers share a natural inclination toward inquiry and investigation. We seek to understand the world around us, the systems both organic and manufactured and to affect change. This panel will give an inside view of how five gifted artists accomplish these goals through visual media.

**Chair: Colleen Coleman**, The Institute for Community Research, Hartford, CT

**Artists: Sharokin Betgevargiz, June Bisantz, Christine Breslin, Camille Eskell, and Joy Wulke**

**Session VI** (concurrent) | 11 am – 12:30 pm

**6.A. Conceptualizing, Developing and Evaluating Structural Interventions to Prevent Health Disparities Connecticut Salon A**

This panel of researchers and activists will discuss challenges in conceptualizing and measuring ‘root causes’ of health disparities and in developing and evaluating structural interventions.

**Chair: Julia Dickson-Gomez**, The Institute for Community Research, Hartford, CT

**Joanne Mantell**, HIV Center for Clinical & Behavioral Studies, Columbia University, New York, NY

**Merrill Singer**, Hispanic Health Council, Hartford, CT

**Kim Blankenship**, CIRA, Yale University, New Haven CT

**Ann Livingston**, Vancouver Area Network of Drug Users (VANDU), Vancouver, BC, Canada

**6.B. Violence Prevention and Youth Connecticut Salon B**

This session will present information from a survey on youth violence. Issues of teen violence, including street violence and intimate partner violence, will be explored through youth lenses and the arts.

**Chair: Damion Sincere Morgan**, The Institute for Community Research (ICR), Hartford, CT

**Chiedza Rodriguez and Jennifer Rodriguez**, ICR, Hartford, CT; **Melissa Hamilton**, Capital Prep., Hartford, CT; **Matt Killpatrick**, Mosaic–Killingly High School, Killingly, CT; **Jennifer Rosa**, TEAR–Guilford High School, Guilford, CT; and **Ashley Oaks**, Windham High School, Windham, CT

**Felicia T. Whittington** and Hussain Al-Fadhli, Tougaloo College, West Jackson, MS

**Johonna R. McCants**, Institute for Community Peace, Washington, DC; Univ. of Maryland–College Park, MD

**Ras Mo Moses**, Oakland-based artist/activist, Oakland, CA

**6.C. National and Foundation Funded Community Collaborative Research in Health: Peer Review Opportunities and Challenges Connecticut Salon C**

This panel will present views from CBCR-supportive funding arms within public and private health research funders on expectations and challenges in the peer review process for community collaborative research and community level intervention proposals.

**Chair: Margaret R. Weeks**, The Institute for Community Research, Hartford, CT



**William Elwood**, Center for Scientific Review, National Institutes of Health (NIH), Rockville, MD

**Lynne Garner**, The Patrick and Catherine Weldon Donaghue Medical Research Foundation, West Htfd., CT

**6.D. Service Learning, CBPR, and Social Justice Ethan Allen**

This panel will discuss ways of incorporating service learning in the classroom and implications for future student participation in community organizing and creating change.

**Chair: Karen Brown** and Christina Robinson-Dillon, Capital Community College, Hartford, CT

**Cristina Wheeler Castillo and Alison Draper**, Trinity College Science Center, Hartford, CT

**Meltam Türköz**, Isak University, Istanbul, Turkey

**6.E. Development in Developing Countries? Community-Based Research to Evaluate and Critique Development Programs**

**Silas Deane**

Panelists will present comparative case studies to highlight the strengths and pitfalls of community focused development programs.

**Chair: Alec Thornton**, Poverty, Inequality and Development (PID) Research Center, University of Otago, Dunedin, New Zealand

**Clinton Nichols III**, Center for Cultural Understanding and Change, The Field Museum, Chicago, IL

## SATURDAY MORNING BREAKOUT SESSIONS (continued)

SESSION VI (11 am – 12:30 pm) continued

### 6.F. Cultural and Structural Dimensions of HIV Risk in India

#### Nathan Hale North

In this session we will report on three studies in which migration, informal commercial sex work, male concerns about sexuality and sexual dysfunction and a variety of other factors are shown to contribute to HIV risk behavior in vulnerable men and women in urban and rural India.

**Chair: S.K. Singh**, International Institute of Population Sciences, Mumbai, India

**Jean J. Schensul**, The Institute for Community Research (ICR), Hartford, CT and SK Singh and Kamla Gupta, International Institute for Population Sciences, Mumbai, India

**Marlene Berg**, ICR, Hartford, CT and Stephen Schensul, University of Connecticut Medical Center, Farmington, CT

**Sarah Diamond**, ICR, Hartford, CT

**Ellen Cromley** and Jean J. Schensul, ICR, Hartford, CT

### 6.G. HIV and Older Adults: Improving Knowledge, Challenging Assumptions and Developing Successful Partnerships for Research, Advocacy and Activism

#### Nathan Hale South

Within the framework of community-based partnerships, this panel of researchers and activists will discuss gaps in knowledge regarding HIV/AIDS risk among older adults, stigma and stereotypes that impact diagnosis and treatment, and challenges and successes in the development and implementation of HIV prevention interventions for this population.

**Chair: LaFleur Small**, Marlese Durr, and Diana Alexander Jones, Wright State University Department of Sociology and Anthropology and Combined Health district of Montgomery County, Dayton, OH

**Evelyn Baez**, Kim Radda, and Jean J. Schensul, The Institute for Community Research, Hartford, CT; Judith Levy, University of Illinois, School of Public Health, Chicago, IL; and Carmen Reyes, North Central Area Agency on Aging, Hartford, CT

**Robert L. Miller**, School of Social Welfare, State University of New York, Albany, NY

**Kim Radda**, ICR, Hartford, CT

### 6.H. Results of the Hepatitis Vaccine Study

#### Mark Twain

This session will discuss ways of improving the delivery

of community-based hepatitis prevention in injection drug users.

**Chair: Yiqing Hu**, David Paltiel, Greg Scott, Laretta E. Grau, Robert Heimer, Karen H. Seal, Patricia A. Marshall, and Merrill Singer, Yale School of Medicine, New Haven, CT

**Robert Heimer**, Laretta E. Grau, Patricia Marshall, Merrill Singer, Yiging Hu, and Greg Scott, Yale School of Medicine, New Haven, CT

**Laretta E. Grau**, Helen He, Merrill Singer, and Robert Heimer, Yale School of Medicine, New Haven, CT

### 6.I. The Project Choice Campaign and the Sheff Movement Coalition

#### PT Barnum

This panel will present a project that the Sheff Movement Coalition is undertaking to organize urban and suburban parents in support of integrated educational choices.

**Chair: Philip Tegeler**, Poverty and Race Research Action Council, Washington, DC

**Erica Frankenberg**, Harvard University, The Civil Rights Project, Cambridge, MA

### 6.J. Gallery Talk

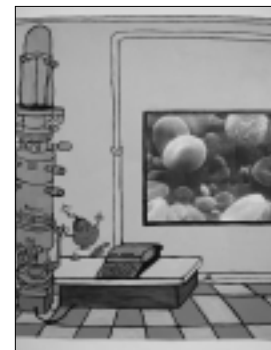
#### The Conrad L. Mallett Galleries, Capital Community College

The arts have the power to touch us through discovery, investigation, insight and elicitation. Come hear what motivated the artists and arts and research project coordinators of the Crossroads II exhibition, *Explorations of Social and Environmental Justice Issues*.

**Facilitator: Colleen Coleman**, The Institute for Community Research, Hartford, CT



John Doe, assemblage in recognition of homelessness, by Stanwyck Cromwell



Little Deboo Learns About Type 2 Diabetes, children's book illustration by Deborah Simmons

**AFTERNOON AGENDA**

**12:30 pm – 1:30 pm**

**Lunch**

**Hilton Ballroom**

**1:45 pm - 2:45 PM**

**Breakout Session VII**

(see descriptions pp 25–26)

**2:45 pm – 3 pm**

**Break**

**3 pm – 5 pm**

**Closing Plenary & Performance**

**Hilton Ballroom**

**Keynote:** ‘Co-Creating the Future: Global Sites, Local Settings, Social Justice and Community-Based Collaborative Research’

**Speaker:** **Jean J. Schensul**, Founder and Senior Scientist, ICR

**Performer:** **John O’Neal**, Founder and Artistic Director, Junebug Productions



John O’Neal

**Session VII** (concurrent) | **1:45 pm – 2:45 pm**

**7.A. Criminalization of Drug Use and HIV**

**Connecticut Salon A**

This panel will present research examining the fundamental contradiction between criminalization of drug use and harm reduction/ public health approaches to reduce HIV and other disease transmission among drug users.

**Chair:** **Rafael Torruella**, City University of New York, Bronx, NY  
**Irene Glasser**, Community Renewal Team, Hartford, CT and  
**Reinaldo Rojas** and Ramon Rojano, City of Hartford, Health and Human Services, Hartford, CT

**Feng Wei**, Yale University, New Haven, CT

**7.B. Harnessing the Media for Arts-Based Intervention and Dissemination Projects**

**Connecticut Salon B**

This panel explores the uses of art in interventions and dissemination of research results with youth partners.

**Chair:** **Colleen Coleman**, The Institute for Community Research, Hartford, CT

**Laura McCargar & Youth**, Youth Right Media, New Haven, CT

**Joe Young, Terrice Kimble and Jennetta Bennett**, Hartford Animation Institute, Hartford, CT

**7.C. Community Leadership and Empowerment Training**

**Connecticut Salon C**

This workshop will provide participants with an opportunity to experience several sample exercises from the Community Leadership and Empowerment Training (CLET) series which has been provided for residents of public and assisted housing. The purpose of the CLET is to teach skills to empower people to become more active and effective in their communities.

**Facilitator:** **Wendy Krom**, Community Consulting Services, Cheshire, MA

**7.D. Hispanic Health Council: A Model for Community-Based Collaborative Research Designed to Address Health Inequities**

**Ethan Allen**

This session will present the Hispanic Health Council as a case study of a community-based vehicle for research with a social justice agenda, with a focus on the essential elements and strategies of the Hispanic Health Council model.

**Presenters:** **Grace Damio and Jeannette DeJesus**, Hispanic Health Council, Hartford, CT

## SATURDAY AFTERNOON BREAKOUT SESSIONS (continued)

*SESSION VII (1:45 pm – 2:45 pm) continued*

### **7.E. Changing the Climate for Participation: Stakeholders in Climate Change Adaptation Research, Policy and Implementation**

**Silas Deane**

The panelists offer concrete examples of ideas and strategies to encourage public participation in adaptation to climate change.

**Chair: Beth Raps**, Adaptation Network, Berkeley Springs, WV

**Sid Gale**, Integrated Management Controls, LLC, Guilford, CT

**Lynne Carter**, Adaptation Network, Barrington, RI



### **7.F. Understanding Communities: The Link Between Interdisciplinary Art and Community**

**Nathan Hale North**

This panel explores the integration of effective arts and community development projects. Topics include how to enhance neighborhood visibility while engaging residents in the process and how to judge quality and evaluate the impact of artistic /cultural expression and research.

**Chair: Jeremy Liu**, Asian Community Development Corp., Boston, MA

**Hiroko Kikuchi**, Performance Artist and Educator, Boston, MA

**Mike Blockstein**, Public Matters, Los Angeles, CA

### **7.G. Addressing the Mental Health Needs of Children and Their Families**

**Nathan Hale South**

This panel will present research evaluating different models to engage and retain children and their families in mental health treatment.

**Chair: Geetha Gopalan**, Columbia University School of Social Work, New York, NY

**Jeanette Andonian**, University of Southern Maine School of Social Work, Portland, ME

**Geetha Gopalan** and James Rodriguez, Columbia University School of Social Work, New York, NY and Columbia University Child and Adolescent Psychiatry, New York, NY

### **7.H. Downside Up and Outside In: Student Education Through Project-Based Learning or Community Partnerships**

**Mark Twain**

This panel describes the service learning participation of university students with *mi casa*, consisting of organizers, homeless service providers, housing and health advocates, and a researcher in a collaborative research program to guide interventions to increase housing opportunities.

**Chair: MaryAnn Sorensen Allacci**, *mi casa*, Lakewood, NJ

**Marla Rae Thorn**, Georgian Court University, Lakewood, NJ

**Alba Hernandez**, Georgian Court University, Lakewood, NJ

**Ileana Fontanes**, *mi casa*, Lakewood, NJ

**Hannah Lanier**, *mi casa*, Lakewood, NJ

**Sara Plachta-Elliott**, Bridgewater State College, Quincy, MA

## POSTERS AND PANELS

### POSTERS

**1. Marlene Berg, Chiedza Rodriguez, Damion Morgan, Rayquan Brown, Stephanie Gonzales, Jennifer Garcia-Rodriguez, Tadnesha Gregory, Marcie Johnson, Eric Nunez, and Sasha Powell,** *Youth Participatory Action Research (PAR): Youth Perspectives on Issues Affecting Teens.* The Institute for Community Research and the Youth Action Research Institute

**2. Marlene Berg, Emil Coman, and Gary Burkholder,** *Youth Action Research for Prevention: A Multilevel PAR-Based Prevention Intervention.* The Institute for Community Research and Walden University

**3. Loren Berman and Lisa Diamond,** *Healthy New Haven: A Community Collaboration.* Yale Robert Wood Johnson Clinical Scholars Program

**4. Ann Bishop, Chip Bruce, Elizabeth Andrejasich, Sunny Jeong, and Timnah Card,** *Community Informatics Corps: Engaging Students in Community-Based Research and Action.* University of Illinois at Urbana-Champaign

**5. Sarah Diamond, Rey Bermudez, Leslie Snyder, Colleen Coleman, and Jean Schensul,** *Collaborating with Young Urban Artists in a Multilevel Drug Prevention Intervention Pilot.* The Institute for Community Research and the University of Connecticut Communications Department

**6. Julia Dickson-Gomez, Mark Convey, and Helena Hilario,** *A Culture of Blame: The Relationship between Housing Policy, Housing Status and HIV Risk among Active Drug Users in Hartford, CT.* The Institute for Community Research

**7. Liam Fitzgerald, Deborah Shelton, Mary Grace Amendola, Carolyn Mull, and Linda Dutka,** *Compañeros por Salud / Partners for Health.* University of Connecticut School of Nursing

**8. Andrea R. Fuhrel, Ann A. O'Connell, Devra K. Dang, Philip M. Hritcko, Catherine Russell, Petra Clark-Dufner, and Bruce Gould,** *Interprofessional and Service Learning for Health Care Students: An Opportunity to Reduce Health Disparities?*

University of Connecticut Educational Psychology Department, University of Connecticut School of Pharmacy, Eastern CT Area Health Education Center, CT Area Health Education Center Program, University of Connecticut School of Medicine, and Saint Francis/UConn Primary Care Center at the Burgdorf Health Center, Hartford, CT

**9. Helena Hilario, Evelyn Baez, Mary Prince, and Jennifer Salonia,** *Checking In: High-Risk Women (Re)Discovering the Female Condom in Hartford, Connecticut.* The Institute for Community Research

**10. Helena Hilario, Jennifer Salonia, Evelyn Baez, and Mary Prince,** *Sustained Safer Behavior (Female Condom Use) in High-Risk Women to Prevent HIV.* The Institute for Community Research

**11. JiangHong Li, Aaron Roome, Rory Angulo, Margaret Weeks, Maria Martinez, Raul Pino, Jennifer Salonia, Eduardo Robles, Michelle Garner, Stephen Schensul, and Lauren Backman,** *Injection Drug Users' Population Estimates in Waterbury and Bridgeport.* The Institute for Community Research, the Connecticut Department of Public Health, and the Center for Disease Control and Prevention's National HIV Behavioral Surveillance (NHBS)

**12. Jason Miller,** *Participating in Web 2.0: Wiki, Flickr, YouTube and Collaborative Research.* University of South Florida

**13. Jason Singh Mukhi,** *The Partnership between Members of the Riverdale Community and Academic Researchers.* University of Toronto in Mississauga

**14. Jean Schensul, S.K. Singh, Marlene Berg, and Kamla Gupta,** *Collaborative Research, Cultural Scripts and Multi-Intervention Strategies for Alcohol Use and Sexual Risk Among Vulnerable Men in Mumbai.* The Institute for Community Research and International Institute for Population Sciences

**15. Lisa M. Vaughn, Dovile Budryte, and Nata Riegg,** *Participatory Action Research (PAR)—A Model for Interdisciplinary Research and International Cooperation with Community Partners.* Cincinnati Children's Hospital Medical Center,



University of Cincinnati College of Medicine, Brenau University, and Saint Mary's University

**16. Elsie Vazquez, Kim E. Radda, Emil Coman, Jean J. Schensul, George Kuchel, Rita Jepsen, and Debbye Rosen, V.I.P.:** *Vaccinate for Influenza Prevention – A Multi-Level, Community-Based Participatory Intervention to Increase Flu Vaccination Rates Among Vulnerable Older Adults.* The Institute for Community Research, University of Connecticut Center on Aging, and the Connecticut Department of Public Health

**17. Margaret R. Weeks, Maryann Abbott, Susu Liao, Jingmei Jiang, Yu Wang, Yuejiao Zhou, Bin He, and Wei Liu,** *Microbicides Readiness in Southern Chinese Sex Workers: Cultural Meanings of HIV Prevention Options.* The Institute for Community Research, Peking Union Medical College, Hainan Province CDC, and Guangxi Province CDC

**18. Margaret R. Weeks, Mark Convey, Maria Martinez, JiangHong Li, Julia Dickson-Gomez, Eduardo Robles, Gregory Palmer, Kim Radda, Michelle Garner, and Juan Restrepo,** *Changing Drug-Users' Risk Environments: Peer Health Advocates as Multi-level Community Change Agents.* The Institute for Community Research

**19. Kathleen J. Welch and Alan D. McGillivray,** *Field of Beans and Dreams,* Hightower & Sparks, University of Maine at Farmington

### PANELS

**Jean Schensul, Raul Pino, Regina Blake, Rey Bermudez, Orlando Velazco, Sarah Diamond, William Disch, Colleen Coleman, Kyle Young, Rashida Copes, Allan Wagner, and Bildade Augustin,** *Rollin' and Dustin': Pathways to Urban Life Styles.* The Institute for Community Research & the Hartford Animation Institute

**CROSSROADS II  
GALLERY ARTISTS**

**FEATURED ARTISTS**

- Linda Abadjian
- Diane Barceló
- Deborah Barrett
- Christine Breslin
- Sharokin Betgevargiz
- June Bisantz
- Rodney Bull
- Stanwyck Cromwell
- Ron Casanova
- Camille Eskell
- Sally Galman
- Janet Maxey
- Kate MacDonald
- Victor Pacheco
- Margaret Plaganis
- Susan Rosano
- Lisa Studier
- Deborah Simmons



*Abduction*, mixed media collage,  
by Sharokin Betgevargiz



*Connect*, street sign, vinyl on metal,  
by June Bisantz

**ARTS COLLABORATIVE  
PROJECTS**

(listed by project & artist)

Art Saves Lives  
Joey Krebs

Oil Drum Art  
Jack Lardis

Projects for a New Millennium  
Joy Wulke

Hartford Animation Institute  
Joe Young

**ARTS/RESEARCH PROJECTS**

(listed by project, organization & researcher[s])

Arts Smarts  
Institute for Cultural Partnerships  
Lisa Rathje

The Remembering  
St. Petersburg Oral History Project  
Alisha Winn

Hightower & Sparks Art  
Univ. of Maine at Farmington  
Kathleen Welch & Alan McGillivray



*Untitled (Good)*, digital photography with embedded words, by Diane Barceló



*View from My Parent's Bedroom in 1983*,  
acrylic and ink on paper, by Linda Abadjian

## EXHIBITORS, FUNDERS AND SPONSORS

### EXHIBITORS

Community Campus Partnerships for Health (CCPH)  
Johns Hopkins University Press  
ESRI GIS Mapping Software  
New York University  
REAP Change Consultants  
Center for Interdisciplinary Research on AIDS (CIRA)  
The Institute for Community Research (ICR)

### FUNDERS AND SPONSORS

We would like to thank our funders and sponsors for their generous support, making this conference possible.

#### Major Funders

The Patrick and Catherine Weldon Donaghue Medical  
Research Foundation  
The Hartford Foundation for Public Giving's Joseph A.  
Zita Fund  
Community Foundation for Greater New Haven's Vivien  
White Fund

#### Sponsors

##### Gold (\$2,500 – \$4,999)

Center for Interdisciplinary Research on AIDS (CIRA)  
Connecticut Health Foundation  
ING

##### Silver (\$1,000 – \$2,499)

Pfizer

##### Bronze (\$500+)

In Memoriam John Robert Jones IV





## **The Patrick and Catherine Weldon Donaghue Medical Research Foundation**

---

The Donaghue Foundation was established by Ethel Donaghue as a memorial to her parents. She directed in her will that the Foundation, a charitable trust, be used to provide "financial assistance for research ...to promote medical knowledge which will be of practical benefit to the preservation, maintenance and improvement of human life."

Since beginning in 1991, the Donaghue Foundation has funded over \$70 million in medical and health related research. The Foundation has helped establish a number of research programs and supported the work of researchers in a variety of ways including

**Improving Access to Mental Health Services for Older Hartford Residents**

**Easy Breathing: A Public-Private Alliance for Prevention**

**Women's Health Research at Yale**

**Sistertalk Hartford: A Partnership Between Medical and Faith Communities**

**The Donaghue Initiative for Biomedical & Behavioral Research Ethics**

**Program for the Study of Health Care Relationships**

**The Connecticut Collaboration for Fall Prevention**

**Improving the Quality of Care by Promoting Patient-Centered Decision Making**

**Donaghue Investigator career awards**

**Clinical & Community Health Issues grants**

18 North Main Street  
West Hartford, CT 06107-1819  
860.521.8011  
[www.donaghue.org](http://www.donaghue.org)



## **SPECIAL THANKS**

We would like to thank The Institute for Community Research Board of Directors who have supported the work of the Institute over the past two decades:

President, Marnie Mueller

Vice President, Nelson Rivera

Secretary/Treasurer, Edward W. Sarabia

Elizabeth Anderson

Jilda Aliota

Lara Descartes

Robert Fisher

E. Anne Foss

Gwen Lewis

Georgina Lucas

Beth Parcella

Evelyn Newman Phillips

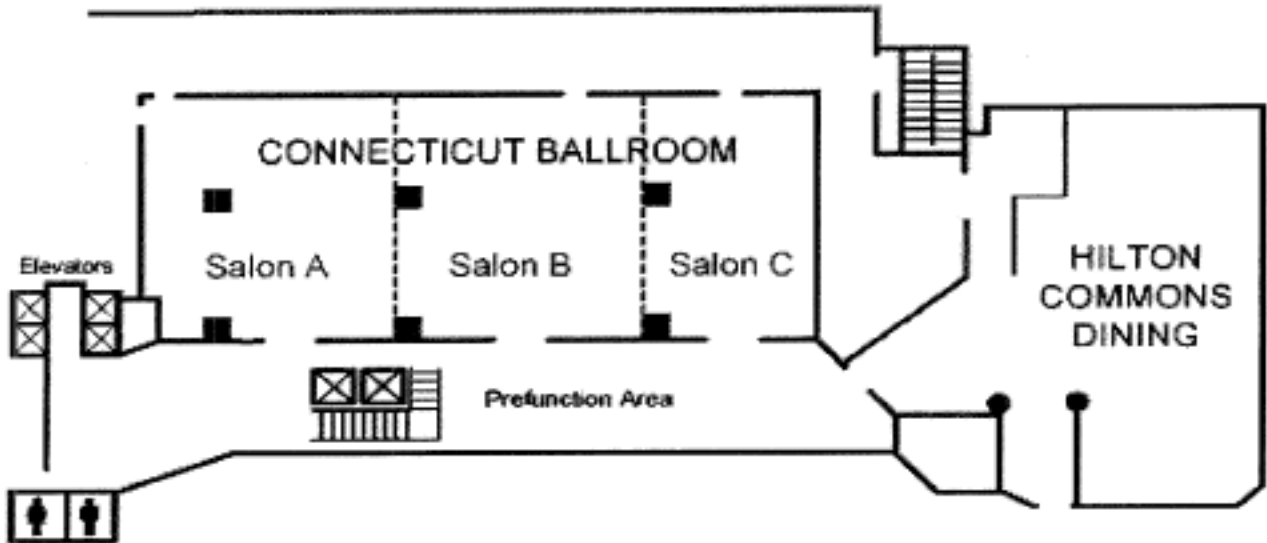
David Roozen

Louise Simmons

James Trostle

Finally, we would like to thank all ICR staff for their work in conceptualizing this conference, and offering their time and energy to making this conference possible.

**HILTON HARTFORD HOTEL  
2ND FLOOR**



**3RD FLOOR**

